

- 
- City of DENTON

- PECAN CREEK LINEAR
TRAIL MASTER PLAN

- COMMUNITY MEETING - AUGUST 30,
2022

meeting housekeeping

- HOUSEKEEPING ITEMS



- All attendees are muted and video is currently disabled



- Staff is available to answer questions in the chat



- Q/A will open up at the end of the presentation. Please use Raise Hand Icon



Video is being recorded



Presentation and project information will be posted to www.discussdenton.com



If you are joining by phone, please replace your phone number with your name



City of Denton Project Team

- Project
- Team

Parks and reCreation Staff

- Gary Packan, Director of Parks & Recreation
- Fince Espinoza, Assistant Director of Park Planning & Operation
- John Whitmore, Park Planning Manager
- Chris Escoto, Park Planner
- HayWood Morgan, Urban Forester

Additional City Staff

- Nathan George, Sr. Planner Bicycle, Pedestrian, ADA Coordinator
- Christi Upton, Environmental Services & Sustainability
- Development Services Review Team (Engineering, Electrical, Fire, Planning, Real Estate, Solid Waste, W/W)

Consultant

- Halff Associates Inc, David Buchanan, Project Manager

- Project
- Understanding

Project Background

- Scope of Project consists of 30% Schematic level (Project alignment)
- Intent of project is to identify the trail alignment and pursue the remaining Design & Construction through grant funding.
- Several grant opportunities Federal, State, and Regional (NPS, TPWD, NCTCOG, TXDOT)
- This stage will mainly focus on alignment and type of experience for the trail. Minimum 10ft (Concrete, Natural, Bike/Ped Bridges, boardwalks, etc.)
- Later along the process we will conduct additional public meetings to seek input on desired amenities, components of trail.

What is the pecan creek linear trail
master plan?

Where we are going



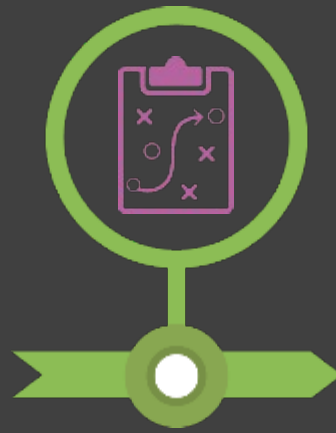
Start

- PARKS, RECREATION AND TRAILS MASTER PLAN



understand

- Project Framework
- VISION AND GOALS



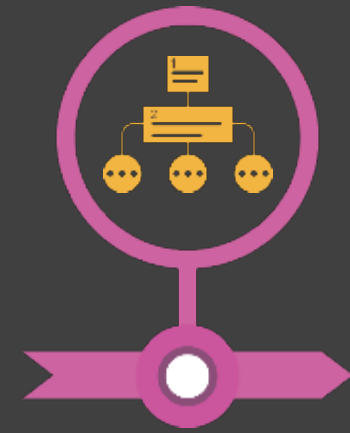
analyze

- Natural
- Built
- Project Site
- Alignment Refinement



listen

- Citizen engagement
- Board/ council engagement



Alignment study

- Alignment Fine Tuning
- Identifying program
- Exploration of cost



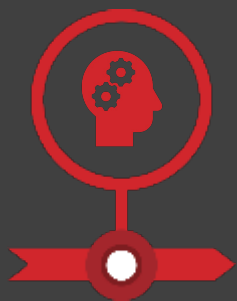
Where have we been

- Denton Parks, Recreation and Trails Master Plan
- Public engagement process
- Identifying priorities for the city



What we have learned

1. Trails were identified as a priority in our public engagement meetings for the City's Parks, recreation and trails master plan
2. Greenbelts become a focus for limited interrupted connectivity
3. Promote connectivity and accessibility
4. Design for all users to promote safety, exploration and social benefits

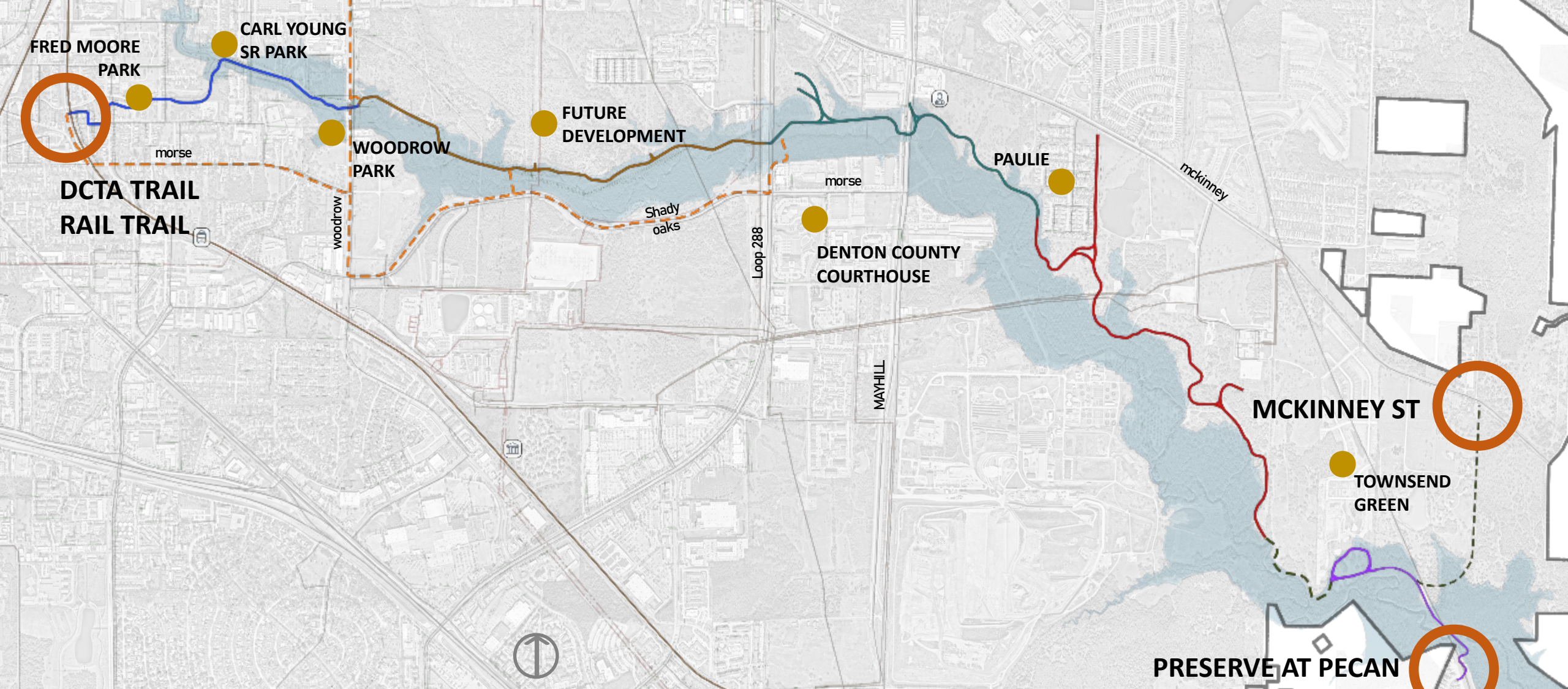


UNDERSTAND

Project Framework

- Project limits
- Constraints & Opportunities

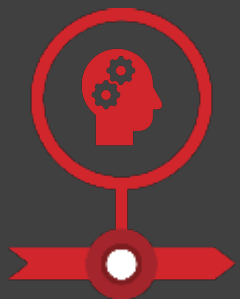




UNDERSTAND

Project Framework

- Project limits
- Constraints & Opportunities



UNDERSTAND

Vision and Goals

1

Create a safe, accessible connection from DCTA Rail Trail to the City's eastern limits

Click icon to add
picture

Click icon to add
picture

Click icon to add
picture

Click icon to add
picture

2

Reveal the corridors natural beauty

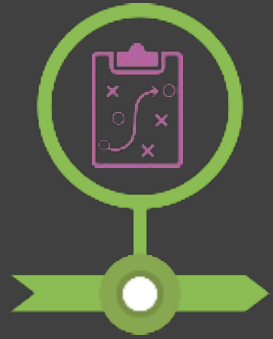
3

Preserve existing Ecology limiting environmental impact

4

Connect the community

Trail alignment



Analyze

- Site Assessment
- Natural Systems
- Built Systems



Character



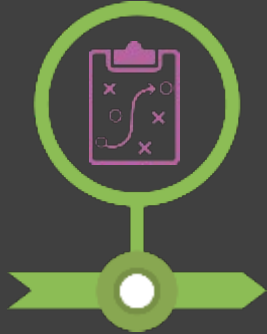
Team Assessment



Safety



Connectivity



Analyze

- Site Assessment
- Natural Systems
- Built Systems



hydraulics

We want the trail to be usable as high as possible!!!



Property ownership

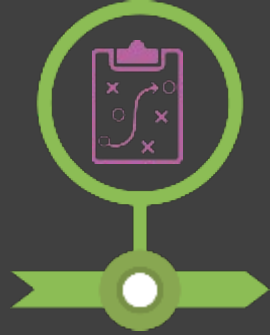
We want TO BE ON PUBLIC (CITY OWNED) PROPERTIES



PrIVATE PROPERTIES

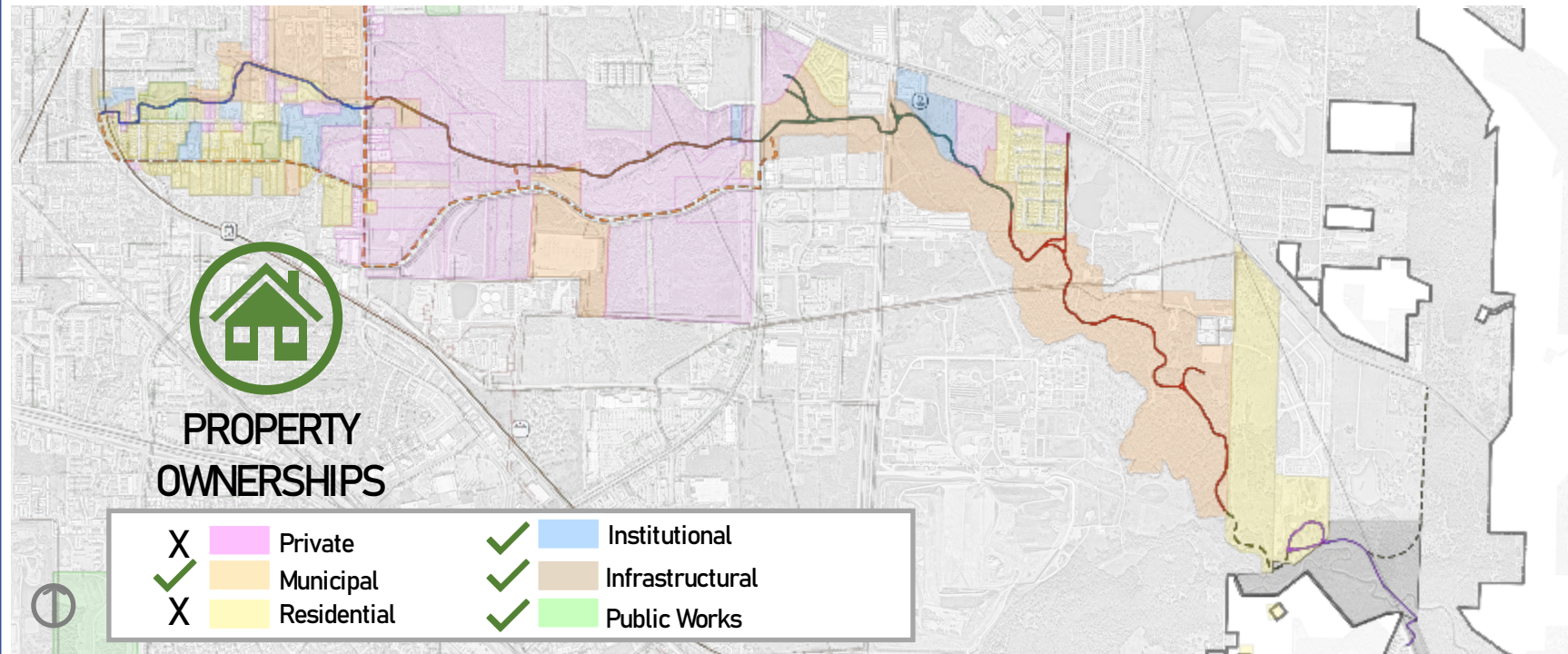
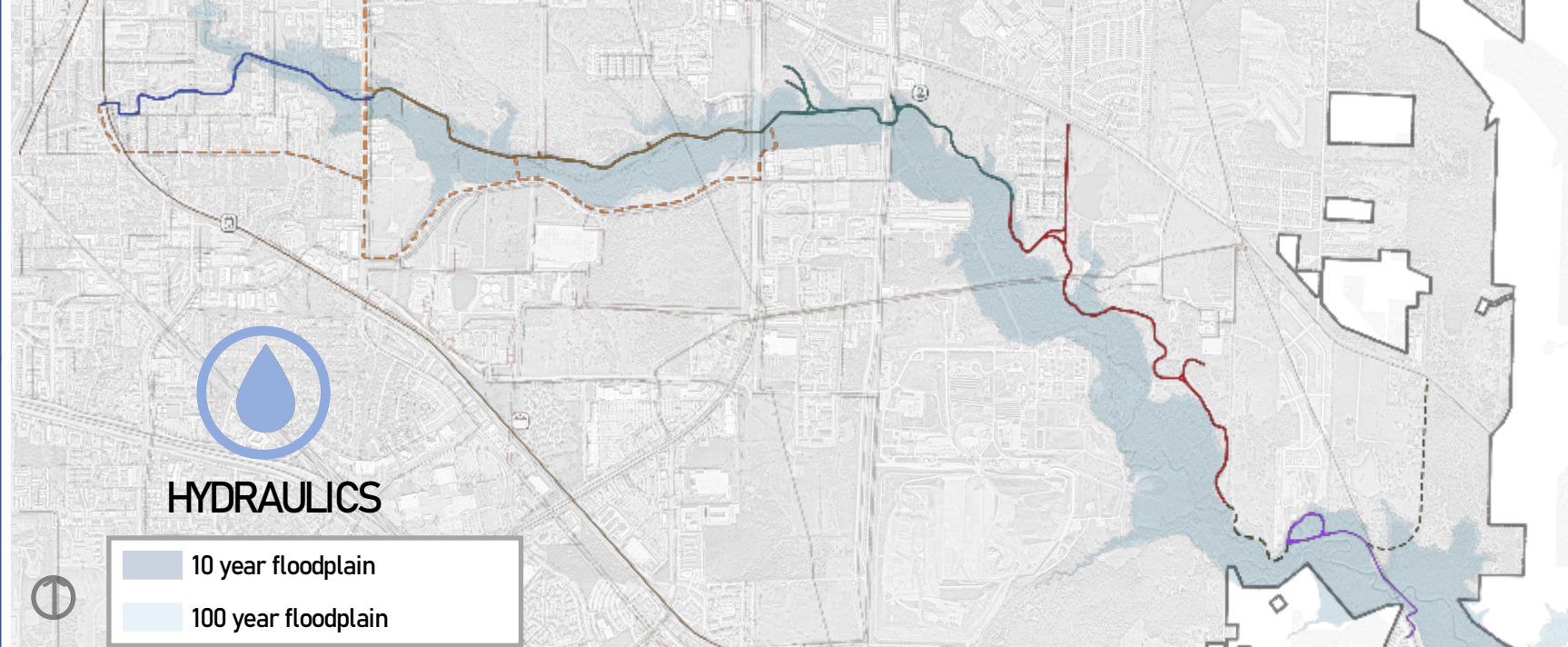


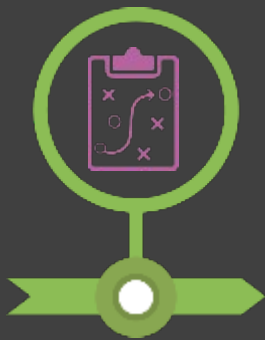
PUBLIC PROPERTIES



Analyze

- Site Assessment
- Natural Systems
- Built Systems





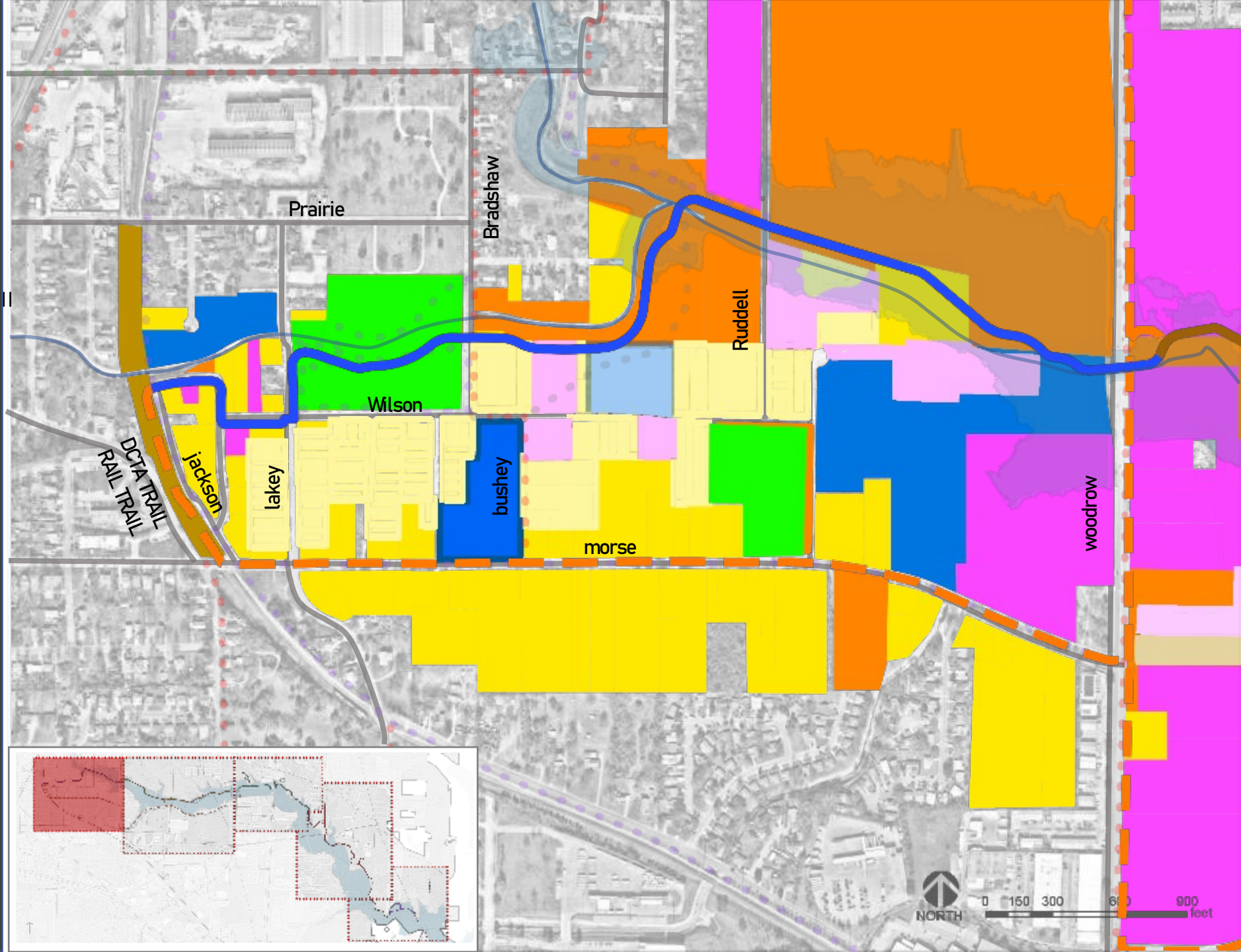
Analyze

Trail alignment

Segment A – DCTA A Trail Rail Trail to Woodrow

LEGEND

- Segment 1 (5,633 ft)
- Segment 2 (7,364 ft)
- Segment 3 (8,251 ft)
- Segment 4 (11,275 ft)
- Segment 5 (5,019 ft)
- Option 2 (18,446 ft)
- Option 3 (5,337 ft)
- Existing Trails
- Planned Trails
- Funded Trails
- Paddling Trails
- Trail Status Unknown
- Private
- Municipal
- Residential
- Institutional
- Infrastructural
- Unknown
- Public Parks





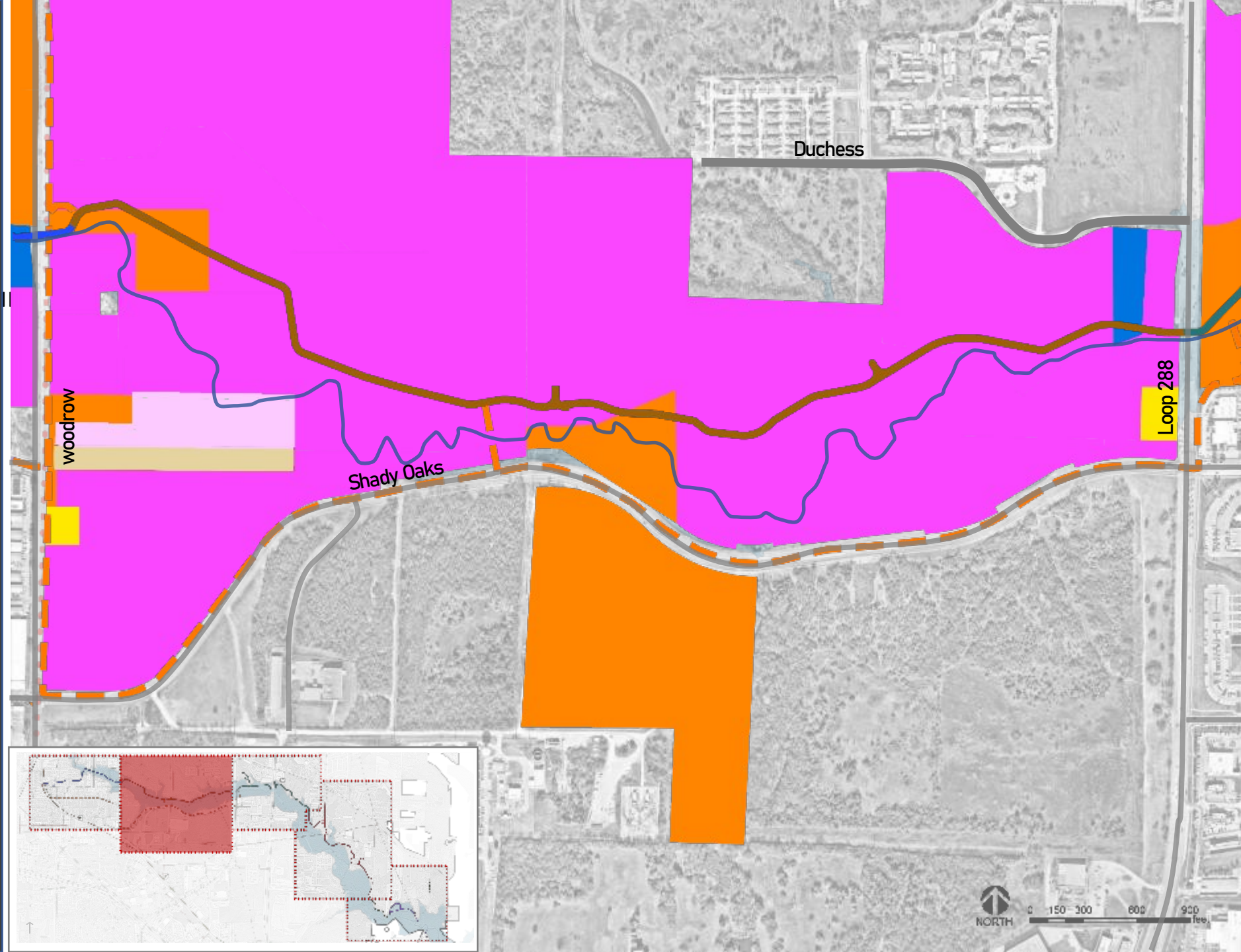
Analyze

Trail alignment

Segment A - Woodrow to Loop 288

LEGEND

- Segment 1 (5,633 ft)
- Segment 2 (7,364 ft)
- Segment 3 (8,251 ft)
- Segment 4 (11,275 ft)
- Segment 5 (5,019 ft)
- Option 2 (18,446 ft)
- Option 3 (5,337 ft)
- Existing Trails
- Planned Trails
- Funded Trails
- Paddling Trails
- Trail Status Unknown
- Private
- Municipal
- Residential
- Institutional
- Infrastructural
- Unknown
- Public Parks





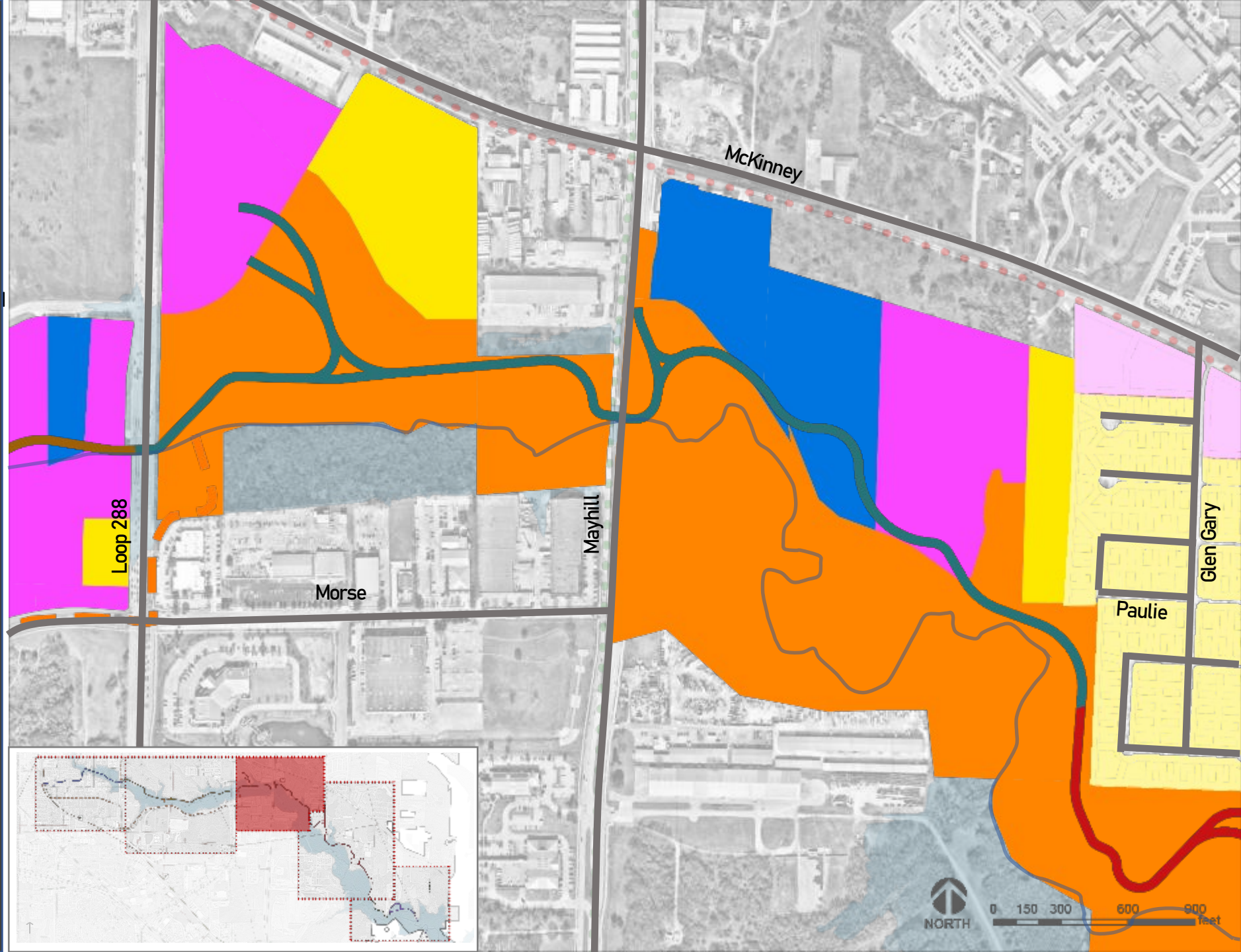
Analyze

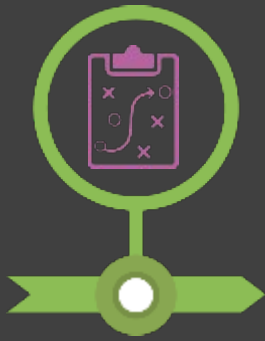
Trail alignment

Segment C – Loop 288 to Paulie

LEGEND

- Segment 1 (5,633 ft)
- Segment 2 (7,364 ft)
- Segment 3 (8,251 ft)
- Segment 4 (11,275 ft)
- Segment 5 (5,019 ft)
- Option 2 (18,446 ft)
- Option 3 (5,337 ft)
- Existing Trails
- Planned Trails
- Funded Trails
- Paddling Trails
- Trail Status Unknown
- Private
- Municipal
- Residential
- Institutional
- Infrastructural
- Unknown
- Public Parks





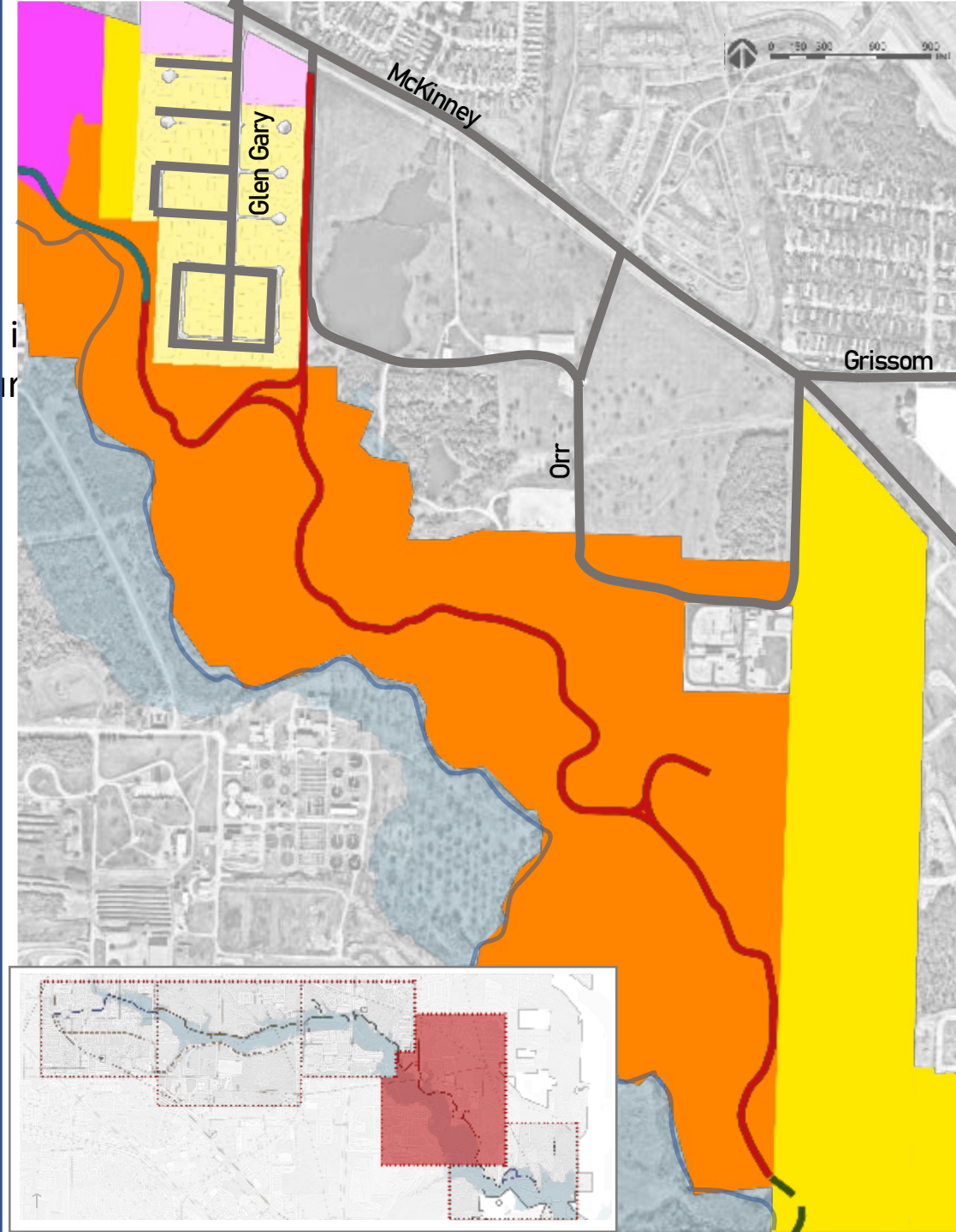
Analyze

Trail alignment

Segment D –Paulie to townsend green

LEGEND

- Segment 1 (5,633 ft)
- Segment 2 (7,364 ft)
- Segment 3 (8,251 ft)
- Segment 4 (11,275 ft)
- Segment 5 (5,019 ft)
- Option 2 (18,446 ft)
- Option 3 (5,337 ft)
- Existing Trails
- Planned Trails
- Funded Trails
- Paddling Trails
- Trail Status Unknown
- Private
- Municipal
- Residential
- Institutional
- Infrastructural
- Unknown
- Public Parks



add

Click icon to add picture



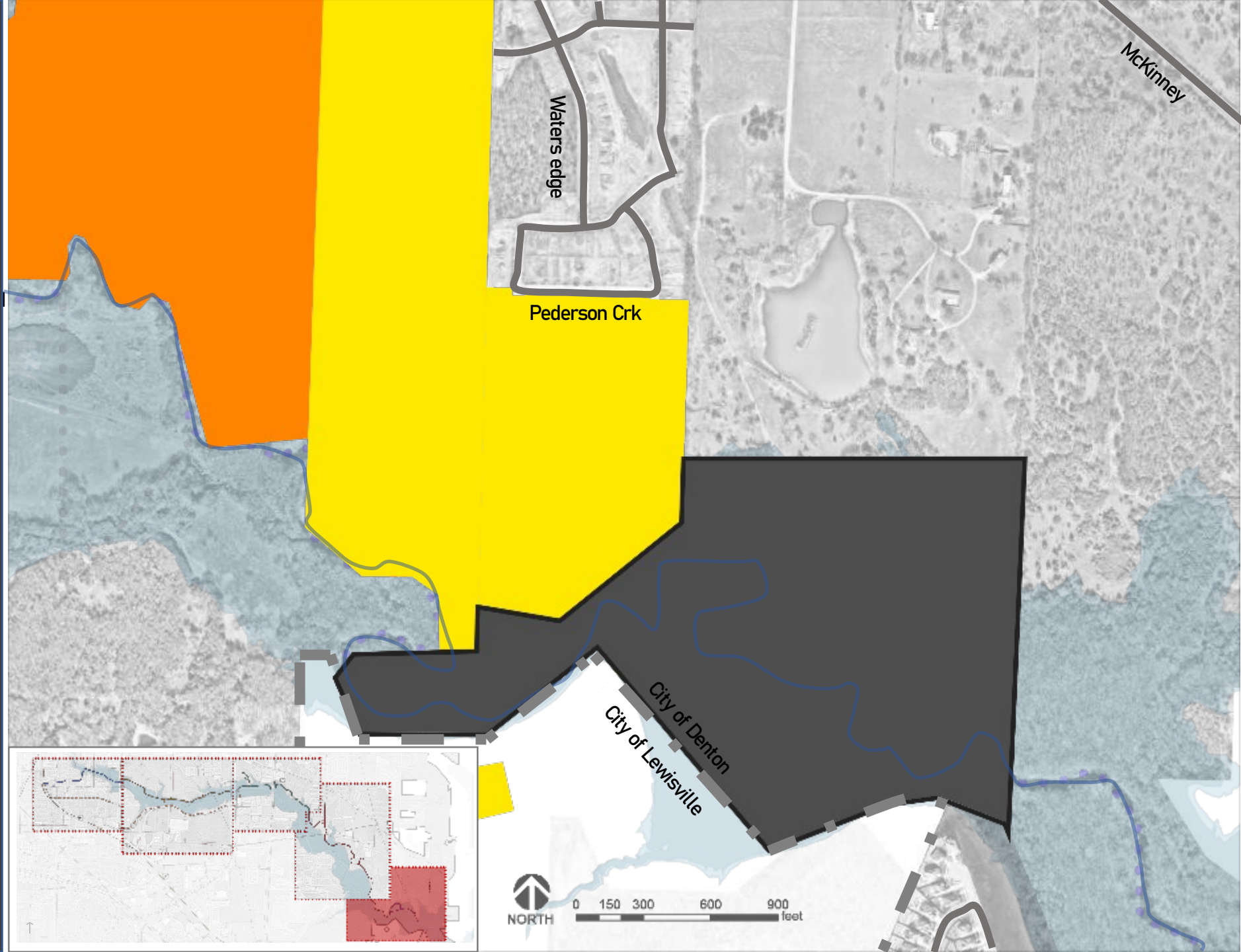
Analyze

Trail alignment

Segment D – townsend green to Preserve at pecan
and mckinney

LEGEND

- Segment 1 (5,633 ft)
- Segment 2 (7,364 ft)
- Segment 3 (8,251 ft)
- Segment 4 (11,275 ft)
- Segment 5 (5,019 ft)
- Option 2 (18,446 ft)
- Option 3 (5,337 ft)
- Existing Trails
- Planned Trails
- Funded Trails
- Paddling Trails
- Trail Status Unknown
- Private
- Municipal
- Residential
- Institutional
- Infrastructural
- Unknown
- Public Parks

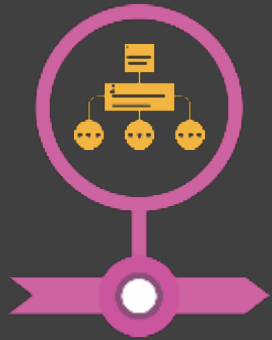




LISTEN

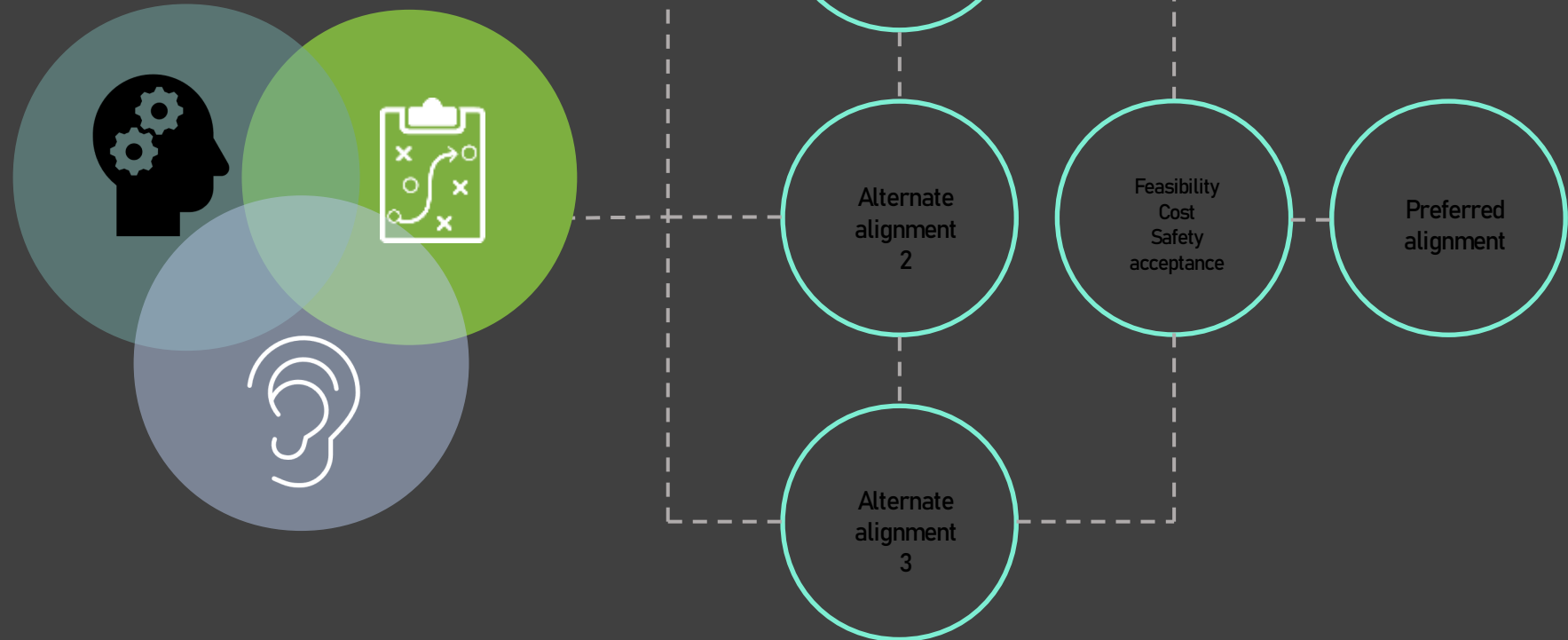
- board/council engagement
- Citizen engagement





Alignment study

- Finding the balance
- Alternative routing



Thank you!

For additional feedback, presentation and
future communication please go to
www.discussdenton.com

