



Bell Avenue Bicycle-Pedestrian Corridor

October 6, 2022

City of Denton

Texas Woman's University



Virtual Community Meeting Reminders

- All attendees are muted
- All attendees video will be disabled
- Questions
 - Q&A
 - Questions will be answered in the order they are received, and will only display in the Q&A after they are answered
 - Select raise hand to request to speak
- Presentation will be recorded and available online after the meeting at www.cityofdenton.com/virtualcommunitymeetings

Participants and Agenda

City of Denton:

David Gaines, Deputy City Manager

Rebecca Diviney, PE City Engineer

Deputy Chief Rose, DPD

Chief Hedges, DFD

Texas Woman's University

Jason Tomlinson, VP for Finance and Administration

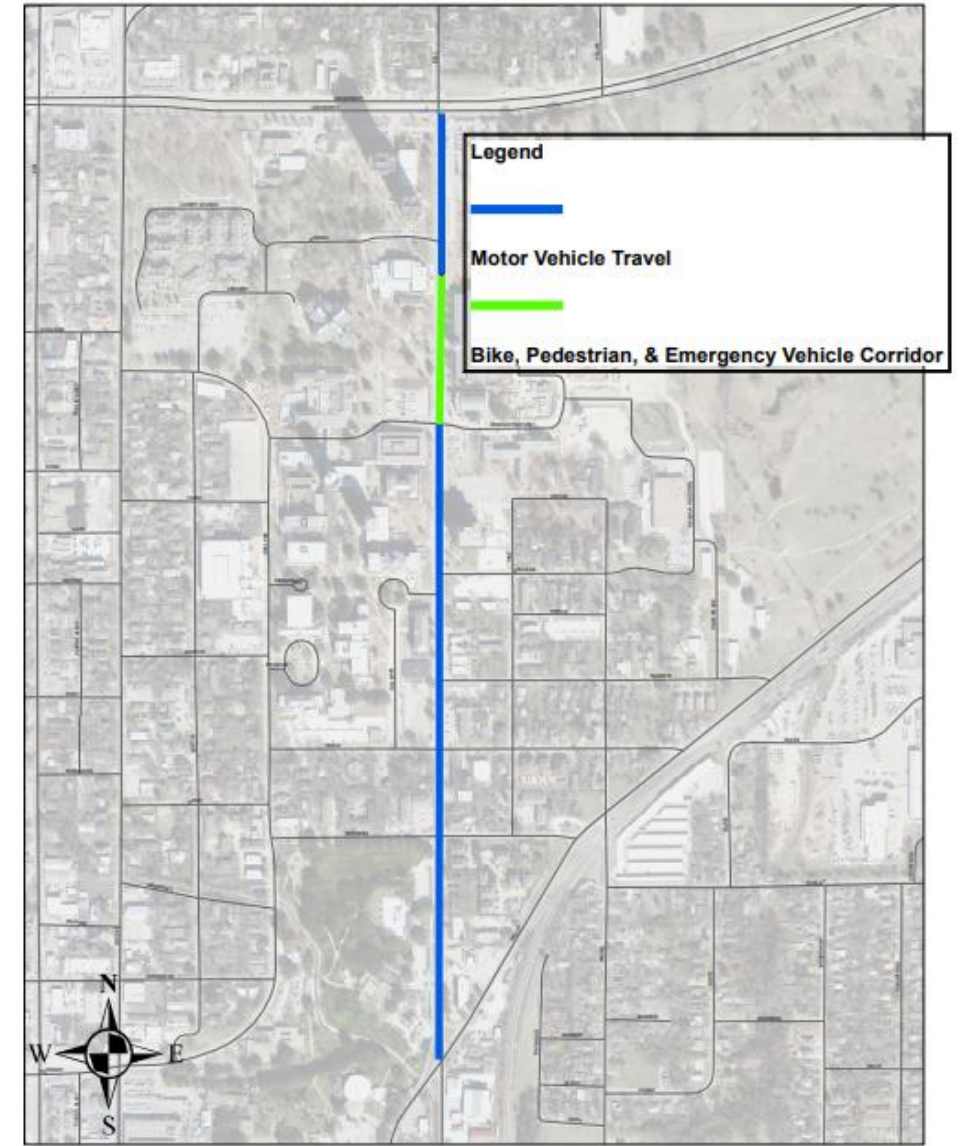
Rob Ramirez, Chief Facilities Officer

Christopher Johnson, Chief of Staff

PRESENTATION OVERVIEW

- Why Are We Here?
- What Has Transpired To-Date?
- TWU Area Traffic Study Results
- Bicycle and Pedestrian Corridor Option Exhibits
- Access with Bicycle and Pedestrian Corridor
- Resident Input
- Next Steps
- Questions

Bell Ave Bike & Pedestrian Corridor



WHY ARE WE HERE?

- City and TWU staff have discussed the option of constructing a bicycle and pedestrian corridor on Bell Avenue from Chapel Drive to Administration Drive and are seeking feedback from residents.

WHAT HAS TRANSPIRED TO-DATE?

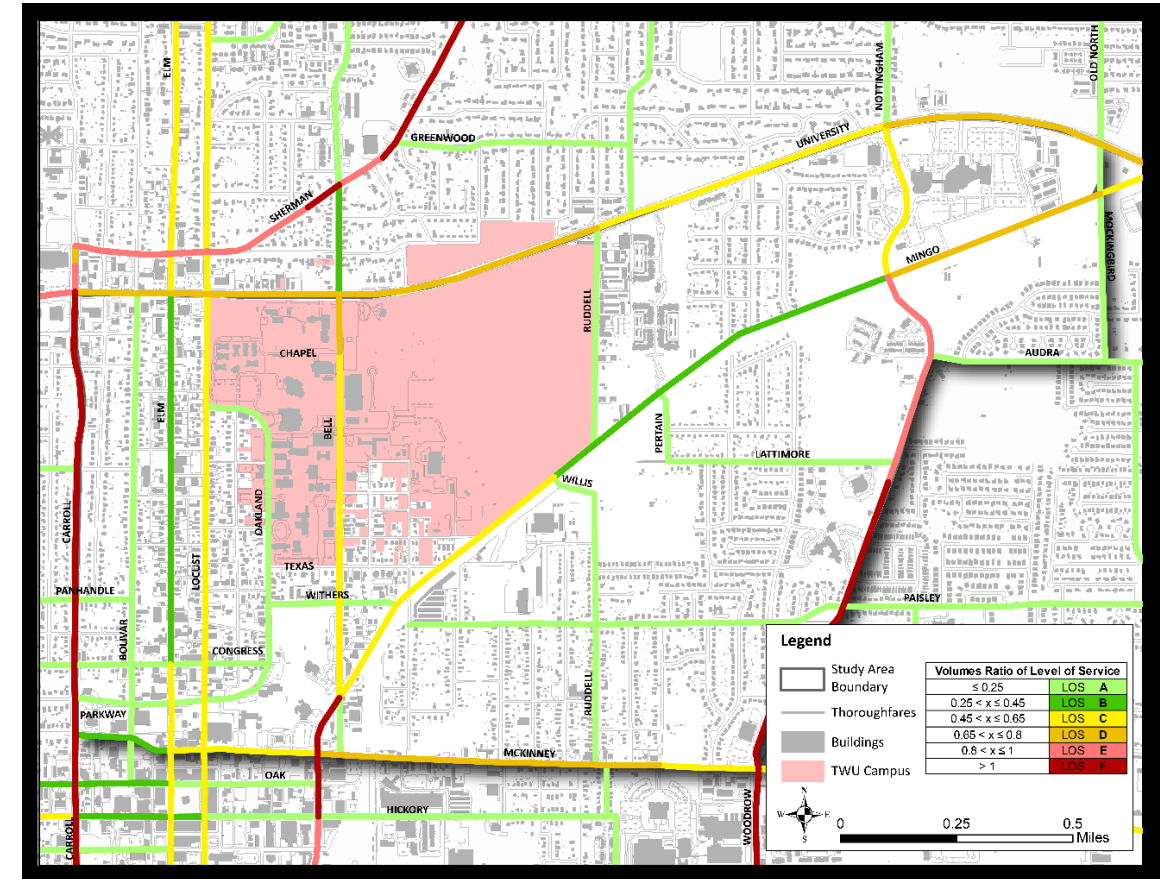
Bell Avenue Bicycle-Pedestrian History

- ✓ 1962 - Pedestrian Bridge constructed
- ✓ 2008 - Pedestrian Bridge closed
- ✓ 2017 - City demolished pedestrian bridge and installed at-grade pedestrian crossings located north and south of Administration Drive



TWU AREA TRAFFIC STUDY RESULTS

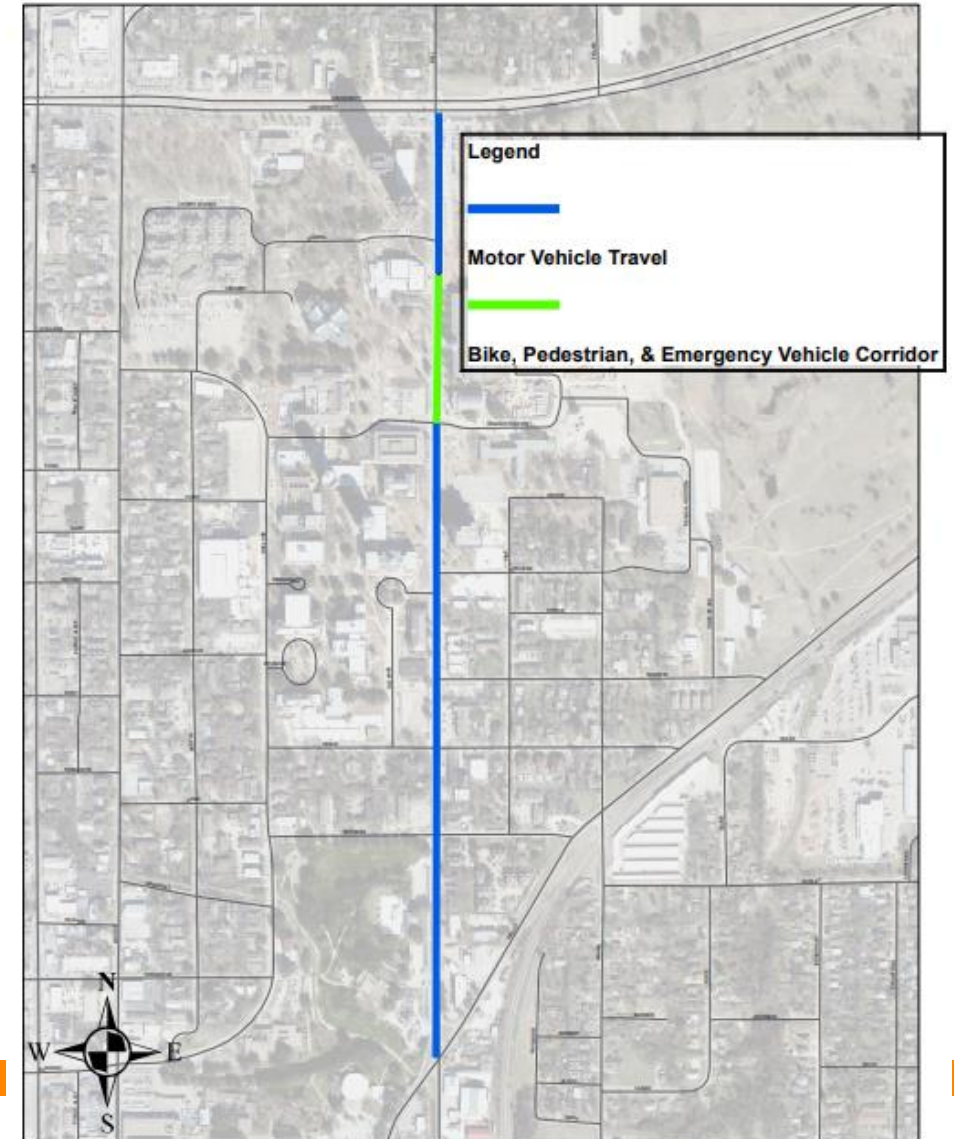
- Fall 2019 - Traffic study data collected
- Fall 2020 - Traffic study produced
- 21 intersections analyzed based on existing and forecasted traffic volumes in 2045
- Each intersection was analyzed based on Bell Avenue being open only to pedestrian, bicycle, and emergency traffic between Chapel Drive and Administration Drive
- **Study Conclusion:** Implementing a Bicycle-Pedestrian Corridor between Chapel Drive and Administration Drive will have no significant impact to surrounding roadways until 2045



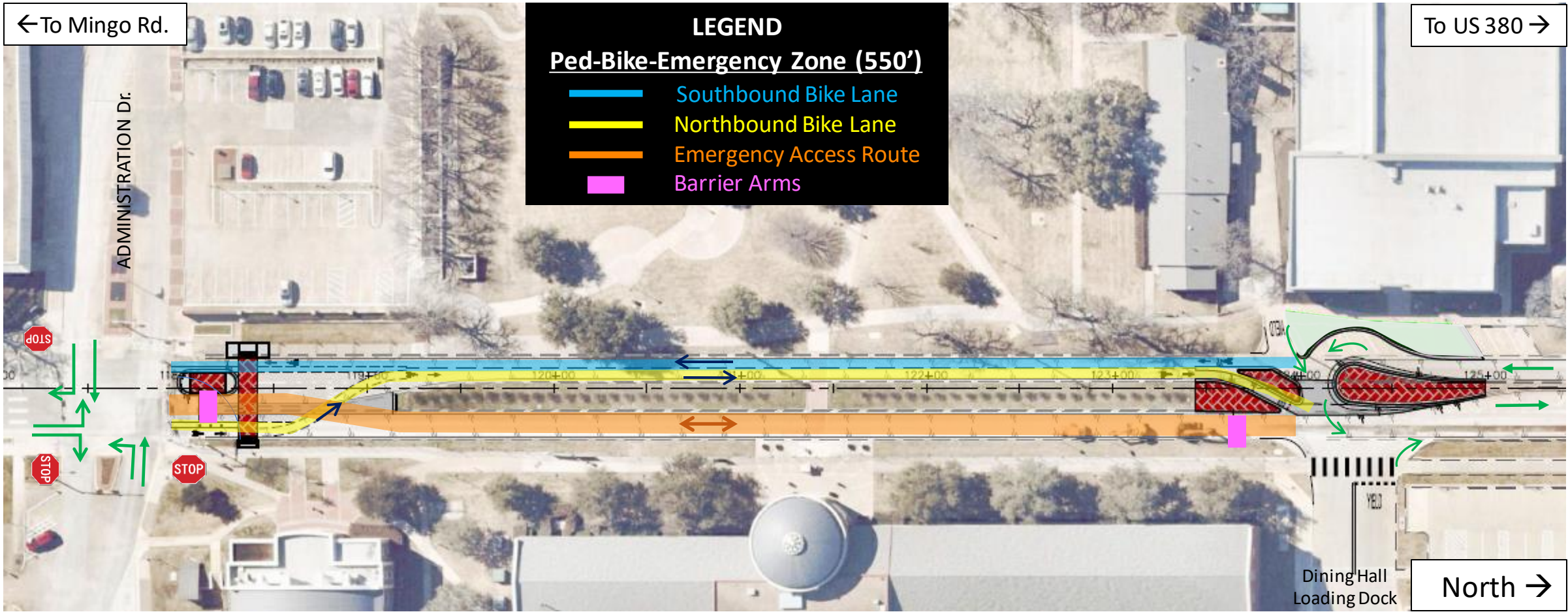
BICYCLE AND PEDESTRIAN CORRIDOR OPTION

Establish a 550-foot dedicated bicycle and pedestrian corridor with an auto-free core from Chapel Drive to Administration Drive that will:

- ✓ Leave 4,000 feet (88%) of Bell Avenue open to motor vehicle traffic
- ✓ Support emergency response vehicles (Fire/Police) using the existing northbound lane
- ✓ Keep access to public utilities
- ✓ Create two dedicated bike lanes
- ✓ Connect to existing sidewalks
- ✓ Accommodate delivery vehicle access to dining hall



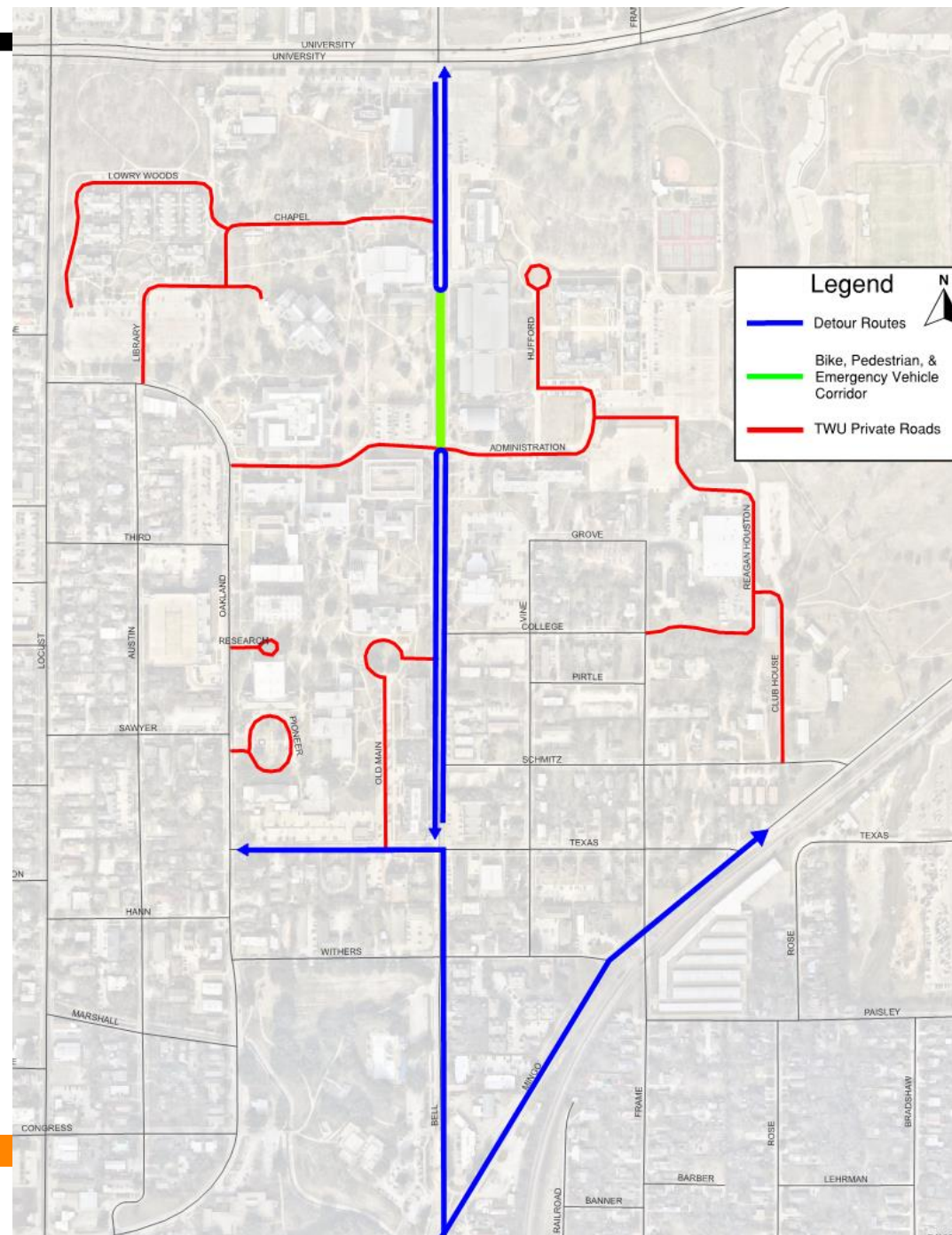
BICYCLE - PEDESTRIAN CORRIDOR OPTION EXHIBIT



BICYCLE - PEDESTRIAN CORRIDOR OPTION EXHIBITS



Access with Bicycle and Pedestrian Corridor



Resident Input

1. Are you in favor or opposed to the proposed Bell Avenue Bicycle and Pedestrian Corridor, for the portion of the roadway through Texas Woman's University from Administration Drive to just south of Chapel Drive. (Single Choice) *

☐ In Favor

☐ Opposed

Poll is open until Monday October 10, 2022 at 5:00 pm

NEXT STEPS

- 10/18/22 City Council Work Session
 - Seek direction on project scope from City Council
- Proceed with Final Survey and Final Design
- Prepare Right-of-Way Use Agreement with TWU
- Select Contractor and Initiate Construction

Questions?